

[www.technik-jo.com](http://www.technik-jo.com)

# MECHANICAL SYSTEMS FOR BUILDING FACADES



01	Who We Are
02	Mission
03	Our Services
04	Ventilated Facades
05	What we Offer
06	Thermal & Water Insulation
07	Fixing System Design Considerations
08	Bracket Systems
15	Channel Systems
19	Framing Systems
26	Reference Projects



---

## WHO WE ARE

The Hashemite Kingdom of Jordan is one of the region's main sources for natural stone for the construction industry.

As natural stone is used more and more as a façade element in buildings, and as architects and designers realize even more creative designs that challenge the suppliers and the installers alike, Technik engineering industries has been for the past 30 years, the pioneering company in the design, fabrication and supply of the fixing systems for natural stone.

Our cladding systems not only assure a solid and secure fixing but provide the opportunity to economize on the total cost of the system through the use of innovation and economically designed systems and solutions.

TEI was established in 1991 as a metal fabrication workshop and has evolved over the years to become the leading supplier of engineered fixing systems primarily for the use of mechanical stone cladding.

TEI played a key role in the evolution of mechanical cladding systems in the Regional Markets through the in-house development of different systems and solutions that suit the local building methods and local base materials commonly used in the market.

Our pivotal role with consultants and architects has enabled the stone cladding market to grow exponentially over the past decade and to bring forward architectural ideas previously believed difficult to conceive.

---

A LEADING DESIGNER AND MANUFACTURER OF FIXING SYSTEMS FOR BUILDING FACADES

---



**500**  
PROJECTS



**1000**  
PARTNERS



**2000**  
CUSTOMERS



**30**  
YEARS OF EXCELLENCE





## MISSION

Enabling Innovative Building Facades for an enhanced experience and lifestyle



## ZERO ENVIRONMENTAL WASTE ASSOCIATED WITH THIS SYSTEM

The Fixing system is environmentally friendly as it does not require the use of mortar or cement products and almost 100% of the finished product may be re-molten and re-shaped in any steel furnace. Moreover, all waste produced during the manufacturing process is Recycled. Thus, there is zero environmental waste associated with this system.

Due to the use of low thickness of stone (normally 3cm) as opposed to the bigger thickness required in traditional fixing systems, the mechanical stone cladding system contributes to the preservation of the stone content.



## SAFETY AND RELIABILITY ARE OUR PRIMARY CONCERN

Safe design and installation is at the top of our priorities, we design our systems in accordance with EN and ASTM standards and the project specifications. We source raw materials direct from the manufacturers and finished goods from renowned and approved suppliers that carry worldwide approvals. We are proud that our installation systems have already withstood the test of time. Projects commissioned more than 25 years ago still stand today like newer structures with not a single case of failure ever registered. This reliability does not only come from good design and sourcing practices but also from continuous site presence, inspection, testing and training during installation. We are bound by ISO 9001:2015 Total Quality Management System and assure quality at every step of our working procedures.

# OUR SERVICES



ENGINEERING DESIGN  
AND SUBMITTALS



INSTALLATION  
TRAINING



ON SITE  
TECH SUPPORT



SITE INSPECTIONS  
& TESTING

## ENGINEERING DESIGN AND SUBMITTALS

Whether requested or not, we, at Technik Engineering, carry out a design check for every new installation incident. A new incident can be as simple as a wider than usual cavity behind the façade material and can be as complex as an outward inclined stone on a roof parapet. We design every case to ensure it's a safe and reliable installation that will withstand the forces of nature for the lifetime of the building.

Using the latest engineering software such as SAP2000, STAAD PRO and others, we ensure safety and compliance to the project specifications and the local building codes. We warrant our systems as a reassurance to our customers. We complement our designs with full project submittals including material certificates, test reports, previous projects approvals and testimonials.



## Ventilated Facades



A ventilated façade is a building envelope fixed to the exterior walls of the building. The façade offers the desired architectural look using traditional building materials like natural stone or more modern materials like porcelain, ceramics or cement boards. Many different types of materials have been developed for building exteriors giving the architects the freedom to choose and the ability to create innovative designs.

Aside from the architectural freedom, a ventilated facade is one of the best investments in a modern, green building design. It does not only cut on the energy bills, it also acts as a protective layer against rain, humidity, heat and fumes that would otherwise degrade the exterior walls and coverings.



The rainscreen initially deflects hot sun rays, UV and rainwater. Open joints between the panels enable air circulation that carries away any transmitted heat and water drops while heat and water insulation layers prevent heat and humidity transmission from the interior to the exterior of the building walls and vice versa. In turn, this preserves the building interior climate and preserves its elements from the effects of heat and humidity. A ventilated façade is thus a system of water insulation, heat insulation, a fixing system and an aesthetic exterior.

All four elements of the system should be designed together to ensure the full benefits are realized



## What we offer

At Technik engineering, we uniquely offer our clients all 4 elements from the initial design to detailing, supply and supervision.

### A successful ventilated facade



#### Design

Water insulation  
Heat insulation  
Rainscreen Fixing System



#### Detail

Shop Drawings  
Detail Drawings  
Custom Solutions



#### Supply

Water insulator  
Heat Insulator  
Fixing System



#### Supervise

Train  
Test & Inspect  
Guarantee

# Thermal & Water Insulation



## Water Insulation Layer



Two-component, polymer-modified, cementitious waterproofing and protective slurry mortar for concrete and cementitious exterior surfaces. It is slightly flexible to tolerate fine cracks.

## Heat Insulation



Heat insulation materials in construction are not only those that we know the most: styrofoam and mineral wool. They also include such materials that provide better protection against heat loss and the permeation of cold air, while being thinner and resistant to moisture.

- Are moisture resistant: they absorb airborne water, rain and snow only to a small extent.
- Are insensitive to temperature change: they should keep their properties both during frost and heat.
- Do not get damaged by any forces or loads that act on them.
- Are flexible and easy to install: their shape adapts to the wall or another building partition.

### Mineral Wool



A product made of melted basalt rocks (rock wool) or quartz sand and cullet (so-called glass wool). It is available in the form of sheets or loose granulate. It serves as thermal and sound insulation. It is non-flammable, fireproof, and load resistant. However, it is also highly hygroscopic.

### Styrofoam

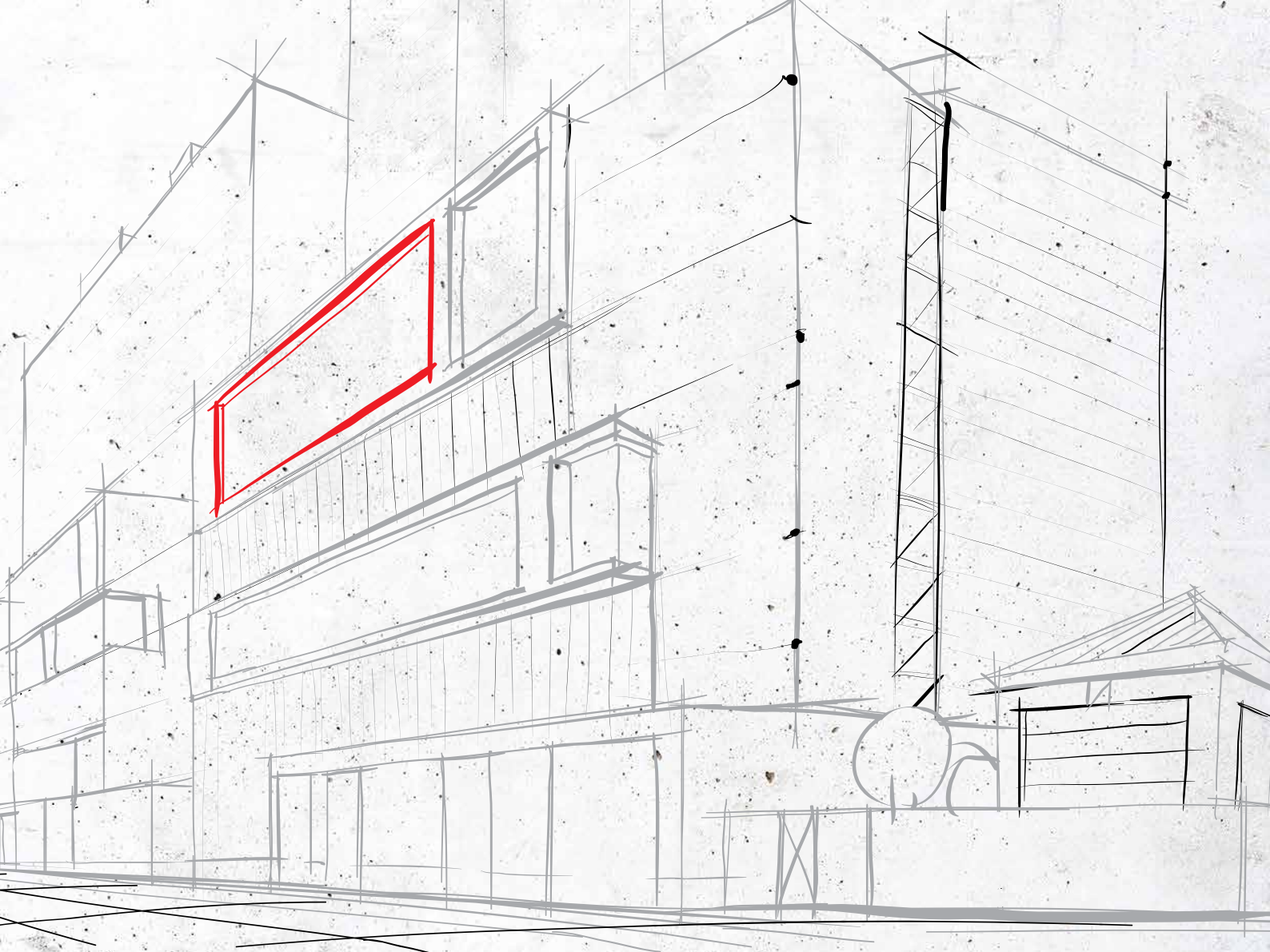


Granules glued together to form panels of different thickness. Styrofoam is produced of processed expanded (EPS) and extruded (XPS) polystyrene. The thermal conductivity coefficient is 0.032 to 0.045 W/(m·K) for the EPS styrofoam and 0.021 to 0.03 W/(m·K) for extruded styrofoam. The latter is harder and shows very low susceptibility to moisture.

### Polyurethane



Has the form of a foam for spray insulation or the form of sandwich panels made of polyurethane foam. It presents very good thermal conductivity parameters, with the coefficient being only around 0.025–0.019 W/(m·K). Unlike mineral wool or styrofoam, it barely absorbs water. In consequence, it performs well also in locations exposed to moisture, for instance at the roof or close to wall gutters.



## Fixing System

# Design Considerations

Careful selection of the rainscreen fixing system is just the first step in this most important element of the ventilated façade. The fixing system ensures the safety of the occupants and passersby as well as the long term preservation of the system components.

The system should be carefully designed in terms of Gravity load bearing, Wind, seismic and impact capacity as well as thermal bridging influence.

---

The following information should be made available prior to the design of the system

- Design standards and project specifications.
- Relevant country building codes.
- Building elevation drawings.
- Wall base materials.
- Rainscreen material properties, dimensions and manufacturer fixing recommendations where available.
- Water and heat insulation materials details.
- Cavities and architectural features.

# BRACKET SYSTEMS

One of the most versatile solutions for mechanical cladding for small to medium Cavities and stone panels.

---

Z Bracket System | M Bracket System  
Up-Down Bracket System | L Bracket System

# Z-Bracket System



## FEATURES AND APPLICATIONS

- Most economic solution for medium and large stone sizes.
- Offers speed and ease of installation.
- Suitable for Concrete or Solid Block base materials
- Available in all grades of stainless steel
- Ask us or mix and match the desired bracket offset with the right length of extension arm, anchor type and pin size depending on the details of your cladding panel.
- Not recommended for stone panels thinner than 25mm

The most widely used bracket for mechanical stone installation thanks to its ease of installation, 3D adjustability and safety. 2 brackets are required per stone panel preferably fixed in the horizontal joints where each bracket holds the weight of the stone above while restraining the one below.

Use Z-Brackets with staggered or aligned stone arrangements, for parapet stones, jambs, sills and special cases.



## Typical Applications



Landscape Stone



Jamb Stone



Parapet Stone



Vertical and Horizontal load Support



Installation at Horizontal or Vertical Joints



Independently Supported Stone Slabs



Covers Medium Cavities (50 - 150) mm



3-Way flexibility of adjustment.



Also used for Granite, Marble and Other Facade Materials

**304**  
STAINLESS  
STEEL

Default Material for All Environments

**316**  
STAINLESS  
STEEL

Highly Corrosive Environments

# M-Bracket System



## FEATURES AND APPLICATIONS

- Solution for Inclined, Overhead and large stone sizes.
- Offers speed and ease of installation.
- Suitable for Concrete or Solid Block base materials
- Available in all grades of stainless steel
- Ask us or mix and match the desired bracket offset with the right length of extension arm, anchor type and pin size depending on the details of your cladding panel.
- Not recommended for stone panels thinner than 25mm

Get all the benefits of the Z-Bracket with the added safety of an additional anchor in the M-Bracket. This is particularly important when fixing overhead stones, larger, heavier or inclined stones.

The M-Bracket is more convenient to install the vertical joints as both anchors would be exposed to the installer. This makes it less common than the Z-Bracket but still essential for certain applications.



## Typical Applications



Jamb Stone



Overhead Stone



Inclined Stone



Vertical and Horizontal load Support



Installation at Horizontal or Vertical Joints



Independently Supported Stone Slabs



Covers Medium Cavities (50 - 200) mm



3-Way flexibility of adjustment.



Suitable For Vertical, Inclined, and Soffit Applications

**304**  
STAINLESS  
STEEL

Default Material for All Environments

**316**  
STAINLESS  
STEEL

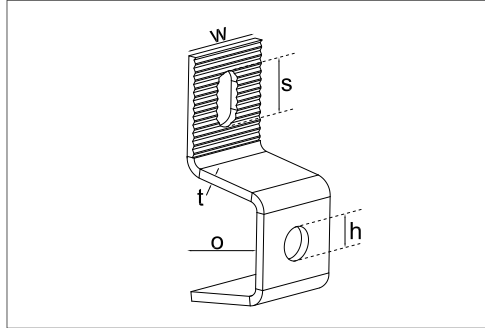
Highly Corrosive Environments

# Z / M - Brackets



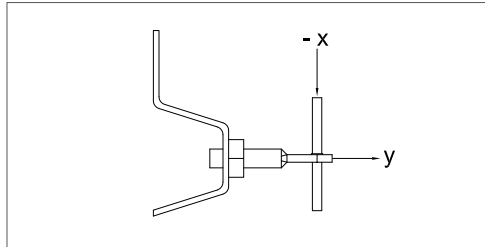
## Bracket Dimensions mm - (Z-Bracket)

Offset	O	20   40   60   80   100   120
Width	W	30   40   50
Thickness	T	3   4   5   6
Anchor Slot	S	9x18   11x22   13x26
Hole Dia.	H	9   11   13



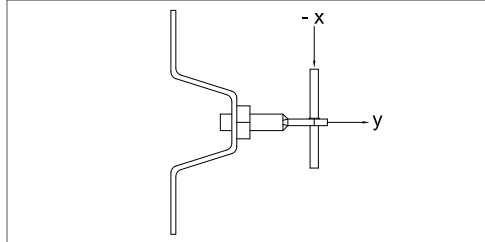
## Nominal Load Capacity kN - (Z-Bracket)

Width	Thickness	Offset	Dead Load Capacity kN (-x)	Lateral Load Capacity kN (y)
30	3	20-40	0.15	0.42
30	4	20-40	0.28	0.70
30	4	50-70	0.25	0.65
30	4	70-100	0.18	0.57
40	5	120-150	0.45	0.70



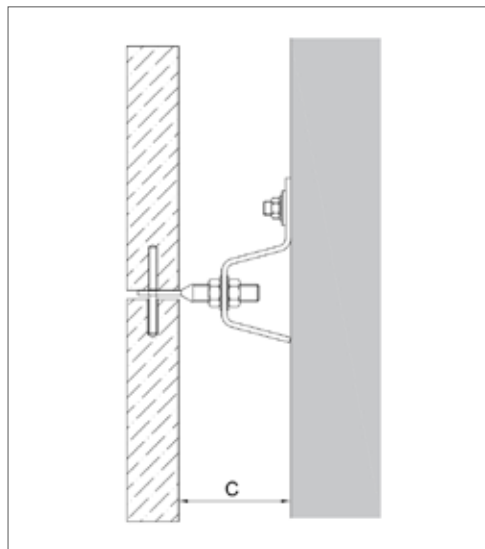
## Nominal Load Capacity kN - (M-Bracket)

Width	Thickness	Offset	Dead Load Capacity kN (-x)	Lateral Load Capacity kN (y)
30	3	20-40	0.20	0.42
30	4	20-40	0.45	0.70
30	4	50-70	0.38	0.80
30	4	70-100	0.40	0.70
40	5	120-150	0.60	0.65



## Cavity Selector

Bracket Offset	Extension Arm Total Length	Min. Cavity (mm)	Max Cavity (mm)
20	55	35	40
30	55	40	50
30	75	55	70
40	75	55	80
40	95	75	100
50	75	60	90
50	95	75	110
60	75	70	100
60	95	75	120
70	75	80	110
70	95	80	130
80	95	90	140
100	95	160	160
120	95	130	180



# L - Bracket System



## FEATURES AND APPLICATIONS

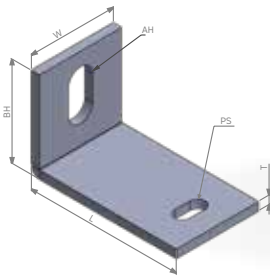
- Primarily Used as a Restraint Bracket
- Used in Combination with Vertical load bearing Support Systems.
- Suitable Solution for Stacked Interior Marble and Granite Slabs Cladding

The L-Bracket is often used as a complimentary item with Other systems to act as a restraining bracket. It can be Fixed directly to the wall or at an offset using a long threaded rod. This is a very useful feature when installing large cornice stones, inclined stones or as an additional restraining support.



### L-Angle Size (mm)

W	25	30
BH	35	35
AH	7X11	9X18
PS	4.5X9	5.5X11
L	30   40   50	
T	2.5	3



## Typical Applications



Parapet Stone



Corniche Stone Restraint



Restraint Only Support



Horizontal load Support Only

Installation at Horizontal or Vertical Joints

Stacked Stone Setup

Used as Restraint Bracket for All Cavities

1-Way flexibility of adjustment.

Can be installed on concrete and solid block base materials.

**304**  
STAINLESS  
STEEL

Default Material for All Environments

**316**  
STAINLESS  
STEEL

Highly Corrosive Environments

# Up-Down System



## FEATURES AND APPLICATIONS

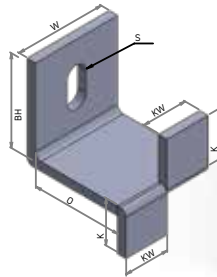
- Most economic solution for Small stone sizes and Cavities.
- Each stone slab is supported independently.
- Offers speed and ease of installation.

Similar to the L-Bracket, the Up-Down bracket comes with two fingers that attach up-down or left-right. They enable the user to fix them inside a stone slit rather than a pin hole. This is particularly useful for thinner panels and softer stone.

Supplied in a few standard sizes but can be produced in special dimensions as per your project requirements.

### Up-Down Angle Size (mm)

W	25	30
BH	35	
AH	7X11	9X18
K	15	
L	30   40	30 40 50 60 70
T	2.5	3   4



## Typical Applications



Parapet Stone



Overhead Stone



Corniche Stone



Vertical and Horizontal load Support



Installation at vertical Joints as restraint only



Independently Supported Stone Slabs



Covers Small Cavities (10-50) mm



1-Way flexibility of adjustment.



Can be installed on concrete and Solid block base materials.

**304**  
STAINLESS  
STEEL

Default Material for All Environments

**316**  
STAINLESS  
STEEL

Highly Corrosive Environments

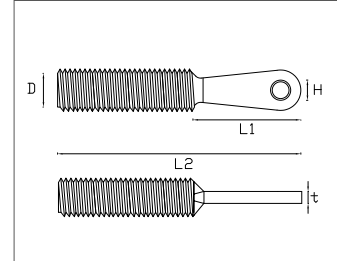
# Bracket Accessories



## Extension Arm

Size (mm)

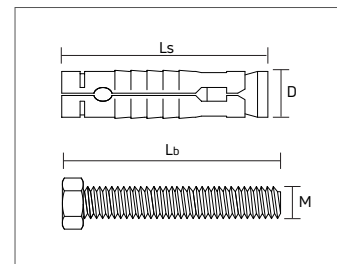
Length	L2	55   75   95   115		
Dia.	D	8	10	12
Flat Part	L1	24	29	29
Flat Part Thick.	T	2.5	3.5	4.5
Hole Dia.	H	4.5   5.5	5.5   6.5	5.5   6.5



## Shield Anchor

Size (mm)

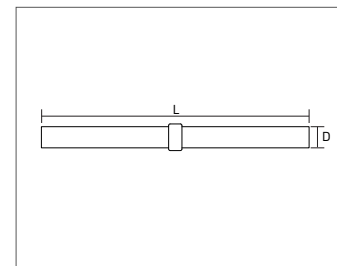
Bolt Size	M	M6	M8	M10	M12
Bolt Length	Lb	50	60	80	90
Shield Length	Ls	40	50	60	80
Drilling Dia.	D	8	10	12	14
Application	Block and Other Soft Materials (Pull Out Test Recommended)				



## Flanged Dowel

Size (mm)

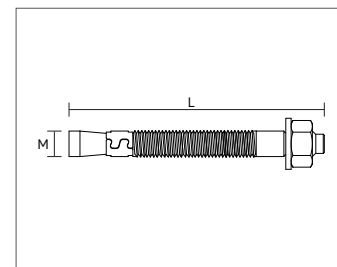
Length	L	40	60
Diameter	D	4	5   6



## Stud Anchor

Size (mm)

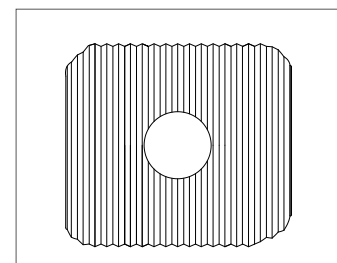
Length	M	M8   M10   M12
Diameter	L	75   90   100   120   140
Application	Cracked and Uncracked Concrete (Request Relevant Approvals)	



## Serrated Washer

Size (mm)

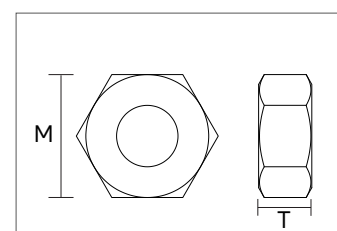
Size	WxL	25X25
Thickness	T	2.5
Hole Dia.	H	8.5   10.5   12.5



## Hex Nuts

Size (mm)

Metric Size		M6	M8	M10	M10-T	M12
Wrench Size	M	10	13	17	17	19
Thickness	T	5	6.5	8	4	10

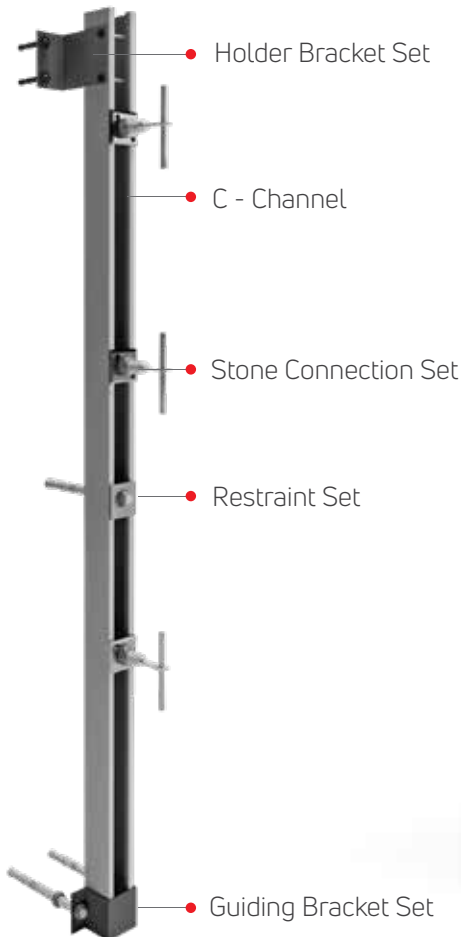


# CHANNEL SYSTEM

Combining all the benefits of the bracket systems with C-channels creates an additional layer of flexibility, versatility and freedom.

---

# Channel System



## FEATURES AND APPLICATIONS

- The optimal solution for large cavities
- Minimizes thermal bridging.
- Replaces traditional steel framing.

The channel system literally enables you to build a wall where there isn't one. It is the ideal alternative to the traditional steel framing without the need for welding, post-installation protection or expensive repair. Ask our team for the full list of accessories, angles and base-plates that allow you to build any shape like a Lego game.



Vertical and Horizontal load Support



3-Way flexibility of adjustment.



Independently Supported Stone Slabs



Covers Large Cavities (100 - 500) mm



Suitable For Vertical, Inclined and overhead Applications

**304**  
STAINLESS  
STEEL

Default Material for All Environments

**316**  
STAINLESS  
STEEL

Highly Corrosive Environments

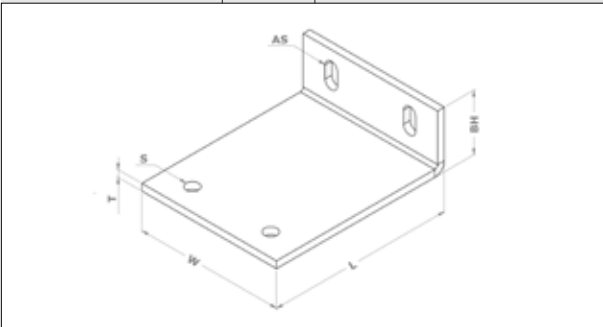
# Channel System Components



## Holder Bracket

Size (mm)

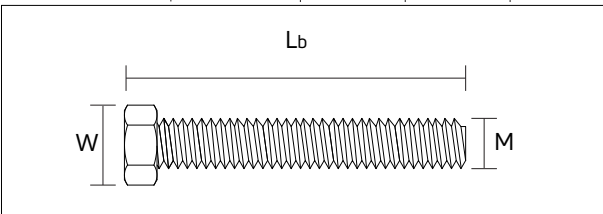
Width (mm)	W	120
Back Height (mm)	BH	50
Length (mm)	L	60   80   100   120
Thickness (mm)	T	4   6   8   10   12
Anchor Slot (mm)	AS	9X18   11X22
Screw Holes (mm)	S	8   10   12



## Hex Bolts

Size (mm)

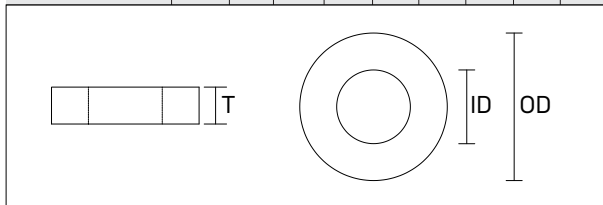
Bolt Size	M	M8	M10	M12
Bolt Length	Lb	60	60	60
Wrench Size	W	13	17	19



## Flat Washer

Size (mm)

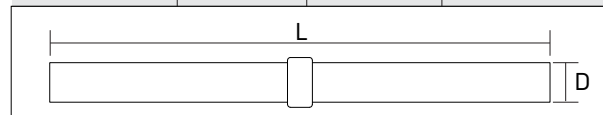
Size		M6		M8		M10		M12	
Internal Dia.	ID	6.4	6.4	8.4	8.4	10.5	10.5	13	13
External Dia.	OD	12	24	16	29	20	29	24	29
Thickness	T	1.4	1.8	1.4	2	1.8	3	2.3	3



## Flanged Dowel

Size (mm)

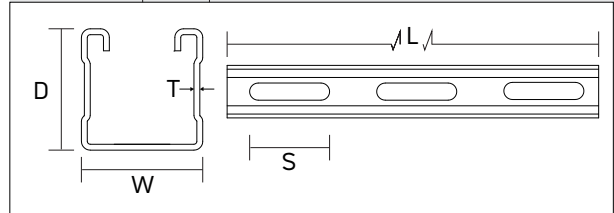
Length	L	40	60
Diameter	D	4	5   6



## C - Channel

Size (mm)

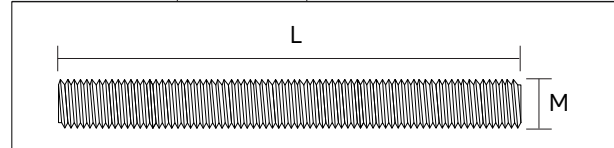
Size	WxD	41 x 21	41 x 41	41 x 41	41 x 52
Thickness	T	2	2	2.5	2.5
Slot Size	S	14 x 32			
Length (m)	L	3000   6000			



## Threaded Stud

Size (mm)

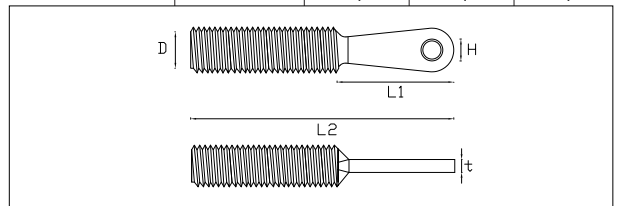
Dia.	M	8	10	12
Length	L	150 - 3000		



## Extention Arm

Size (mm)

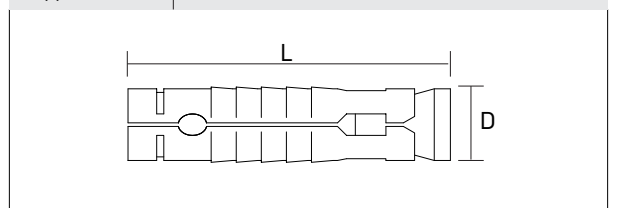
Length	L2	55   75   95   115		
Dia.	D	8	10	12
Flat Part	L1	24	29	29
Flat Part Thick.	T	2.5	3.5	4.5
Hole Dia.	H	4.5   5.5	5.5   6.5	5.5   6.5



## Shield Anchor

Size (mm)

Size		M6	M8	M10	M12
Length	L	45	50	70	80
Drilling Dia.	D	8	10	12	14
Application	Block and Other Soft Materials (Pull Out Test Recommended)				



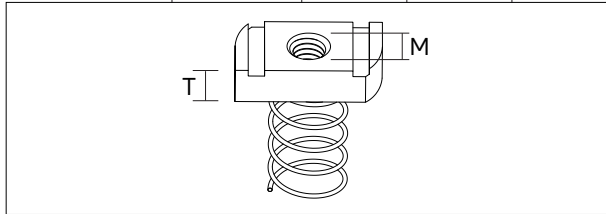
# Channel System Components



## Spring Nuts

Size (mm)

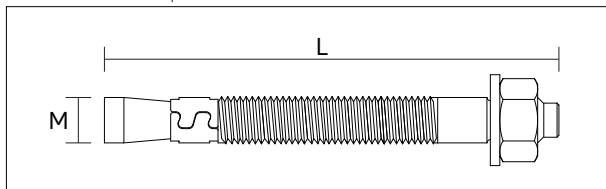
Thread	M	8	10	12
Thickness	L1	6	8	10



## Stud Anchor

Size (mm)

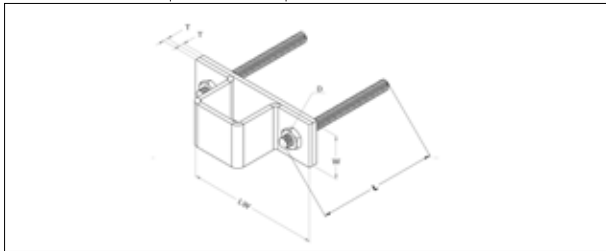
Diameter	M	M8   M10   M12
Length	L	75   90   100   120   140
Application	Cracked and Uncracked Concrete (Request Relevant Approvals)	



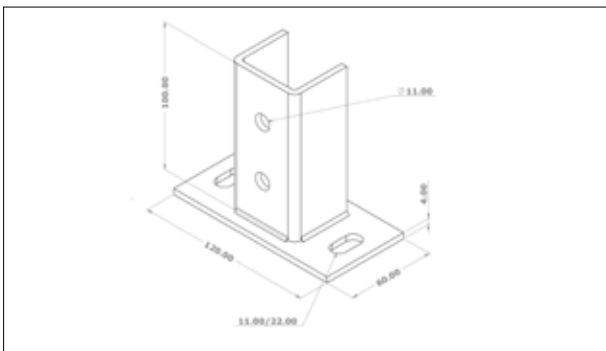
## Omega Guiding Bracket

Size (mm)

Width	W	40
Leg Width	LW	120
Thickness	T	4
Stud Length	L	up to 300
Stud Dia.	D	8   10



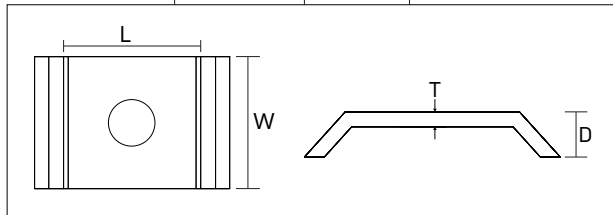
## Channel Base Plate



## Channel Washer

Size (mm)

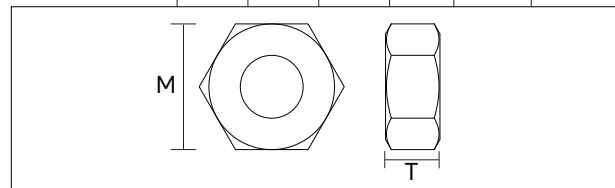
Size		8	10	12
Width	W	40	40	40
Length	L	42	42	42
Depth	D	20	20	20
Thickness	T	4	4	4



## Hex Nuts

Size (mm)

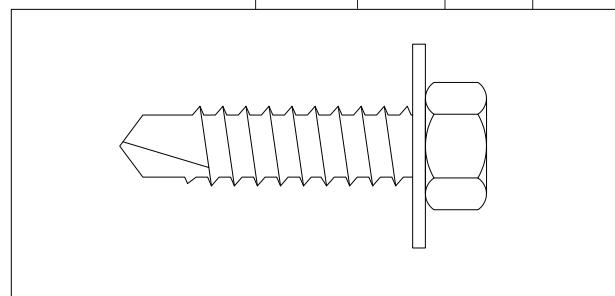
Metric Size		M6	M8	M10	M10-T	M12
Wrench Size	M	10	13	17	17	19
Thickness	T	5	6.5	8	4	10



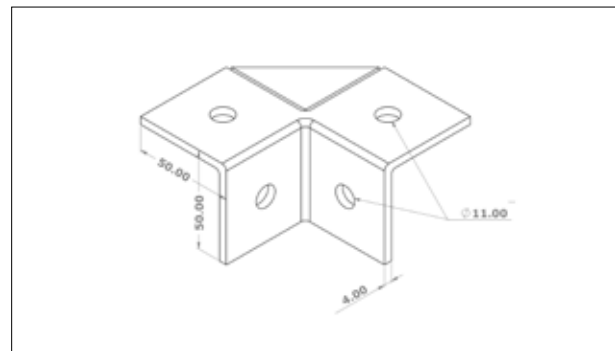
## Self Drilling Screws (SS304/401)

Size (mm)

Hex Head S.D Screw	HEX	4.2x19	5.5x25	6.3x25
--------------------	-----	--------	--------	--------



## Channel Connection Angle



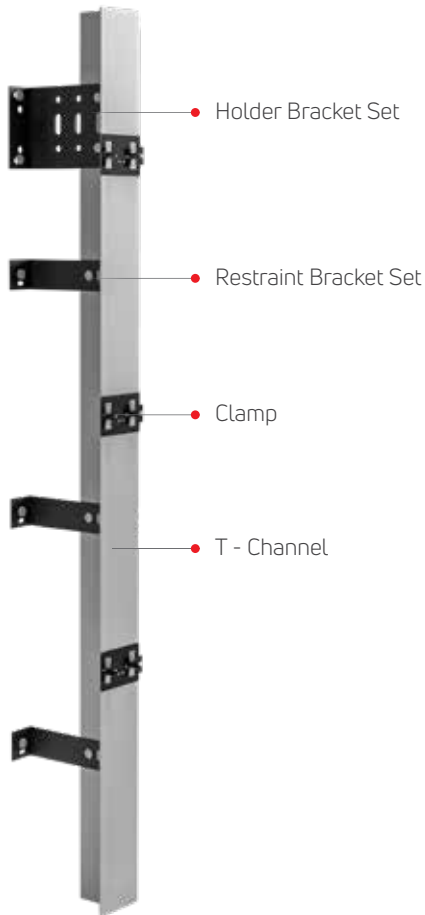
# FRAMING SYSTEMS

Green buildings demand the use of the least impactful materials with the highest levels of heat insulation and least thermal bridging. Explore the world of aluminium and discover how it perfectly combines with the latest facade materials to bring modern green buildings to life.

---

Light Framing System  
Heavy Framing System  
Concealed System

# Light Framing System



## FEATURES AND APPLICATIONS

- Post installed after the water and heat insulation layers are finished and inspected.
- Lightweight and easy to work with on-site
- Easily dismantle and reinstall single panels for future maintenance
- Fast installation thanks to the use of self drilling screws for most fixing points
- Ask us for the revit models to combine with your project or simply throw us this task and we will complete your BIM modelling

The light framing system made from aluminium and stainless steel clamps is ideal for thin ceramic panels, wood panels and cement boards. With a few accessories, you can fix panels of any size or shape almost anywhere. Jambes, soffits, corners, ceilings and parapets can now easily be installed in no time. Easily cut or drill your brackets on site thanks to the softness of the material.



Vertical and Horizontal load Support

3-Way flexibility of adjustment.

Independently Supported Stone Slabs



Covers Medium Cavities (70 - 200) mm



Suitable For Vertical, Inclined overhead Applications

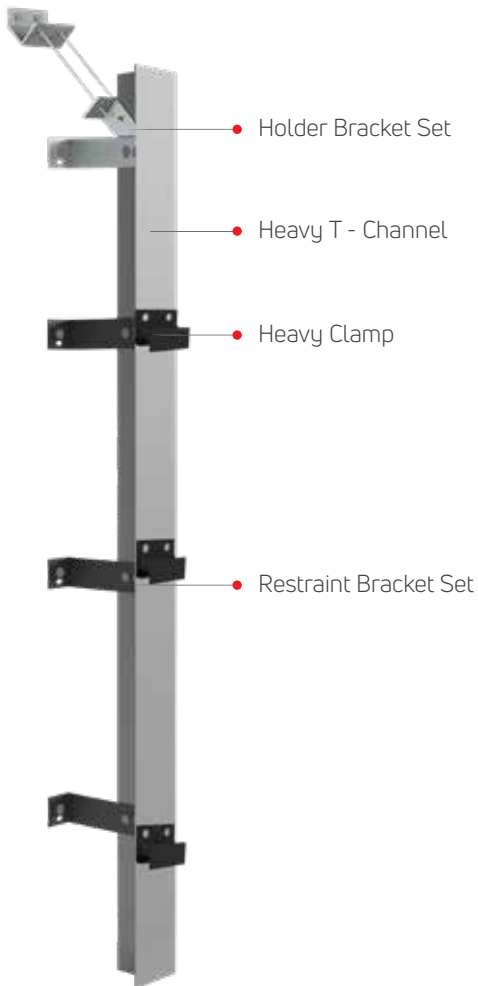


Default Material for All Environments



Highly Corrosive Environments

# Heavy Framing System



## FEATURES AND APPLICATIONS

- The perfect alternative to the traditional bracket systems where uninterrupted insulation layers are desired.
- Combines safety in design, the lifetime of aluminium, the strength of steel, the least thermal bridging points and the highest versatility in one magic system of a few components.
- Fast, fault-free installation is the name of the game in this simple, yet heavy duty system.

Enjoy the architectural freedom desired whether in the size of panels, inclination or distance from the backing walls. Ask us for the revit models to combine with your project or simply throw us this task and we will complete your BIM modelling



Vertical and Horizontal load Support



3-Way flexibility of adjustment.



Independently Supported Stone Slabs



Covers Medium to Large Cavities (120 - 500) mm



Suitable For Vertical and Inclined Applications

**304**

STAINLESS STEEL

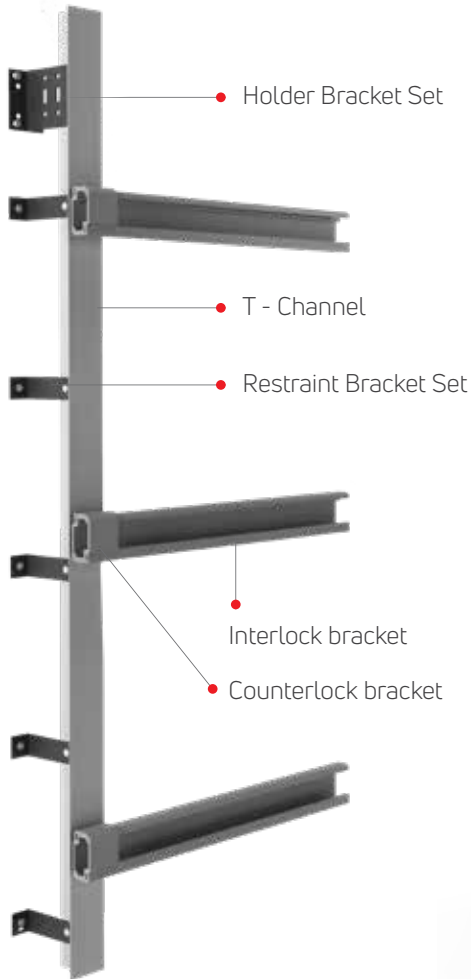
Default Material for All Environments

**316**

STAINLESS STEEL

Highly Corrosive Environments

# Concealed System



## FEATURES AND APPLICATIONS

- Designed with modern materials in mind for extra large panels, extra thin panels or honeycomb backed panels.
- Fully concealed from view thanks to the fixing from the back of the panel
- Allows for easy maintenance with the innovative interlock brackets that click in and out.

This is the go-to solution for architects who desire to build modern facades with extra large panels. Combine the system with undercut anchors or with our special insert for thin panels to fix your desired material.



Vertical and Horizontal load Support



3-Way flexibility of adjustment.



Independently Supported Slabs



Covers Medium Cavities (70 - 200) mm



Suitable For Vertical and Inclined Applications

**304**  
STAINLESS  
STEEL

Default Material for All Environments

**316**  
STAINLESS  
STEEL

Highly Corrosive Environments

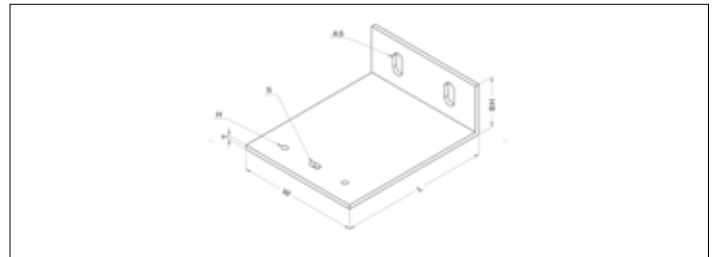
# Framing System Components



## Holder Bracket

Size (mm)

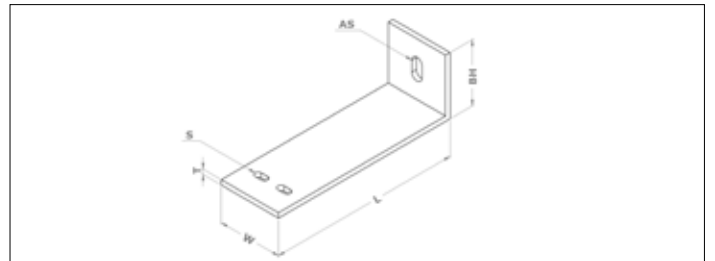
Width (mm)	W	120
Back Height (mm)	BH	50
Length (mm)	L	60   80   100   120
Thickness (mm)	T	3   4
Anchor Slot (mm)	AS	9X18   11X22
Screw Holes (mm)	H   S	6   6x12



## Restraint Bracket

Size (mm)

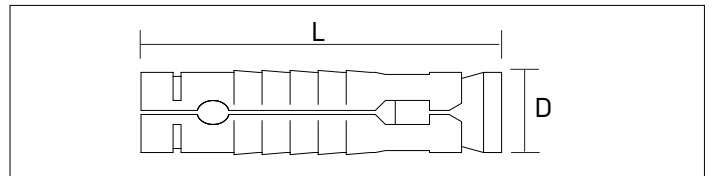
Width (mm)	W	50
Back Height (mm)	BH	50
Length (mm)	L	60   80   100   120
Thickness (mm)	T	3   4
Anchor Slot (mm)	AS	9X18   11X22
Screw Holes (mm)	S	6



## Shield Anchor

Size (mm)

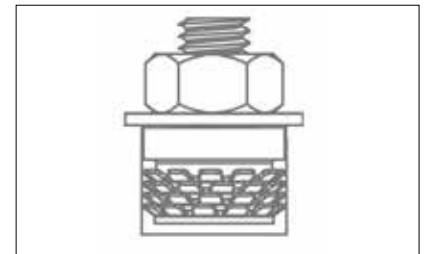
Size		M6	M8	M10	M12
Length	L	45	50	70	80
Drilling Dia.	D	8	10	12	14
Application	Block and Other Soft Materials (Pull Out Test Recommended)				



## Keep-Nut

Size (mm)

Code	Min. Thick. of Panel	Thread	Insert length	Hole Dia.	Hole Depth	Crowns Num.	Avg. Assembly Press-in Force	Avg. Pull-out Strength
	(S)	(d1)	(H)	(d2)	(I2)		(kN)	(kN)
IM1S/--/H5	8	M4   M5   M6	5	12	5.5	1	0.2	0.9
IM25/--/H6	8.5	M4   M5   M6	6	12	6.5	2	0.4	2.5
IM4S/--/H8.5	11	M4   M5   M6	8	12	9	4	1	3.5
IM4S/--/H15	17.5	M6	15	12	15.5	4	1	4.2



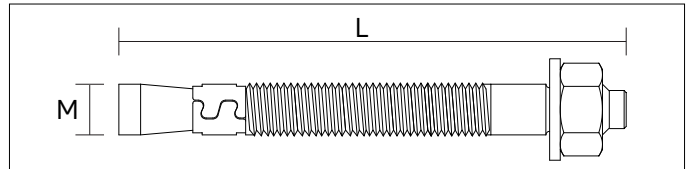
# Framing System Components



## Stud Anchor

Size (mm)

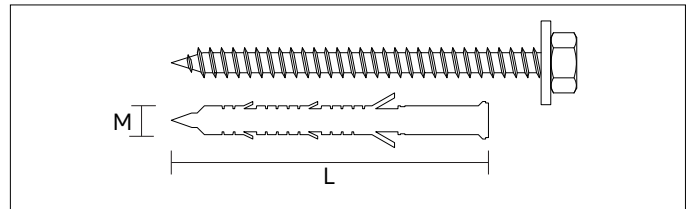
Diameter	M	M8   M10   M12
Length	L	75   90   100   120   140
Application	Cracked and Uncracked Concrete (Request Relevant Approvals)	



## Nylon Frame Anchor

Size (mm)

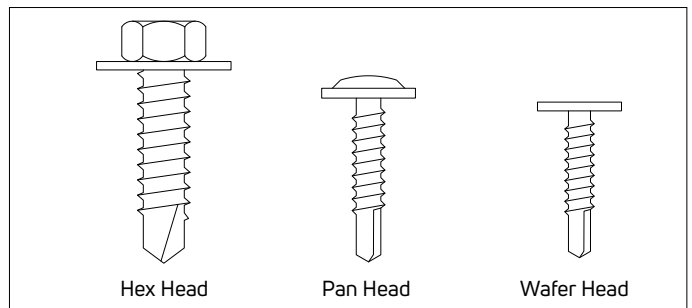
Diameter	M	M8   M10
Length	L	80   100
Application	Cracked and Uncracked Concrete (Request Relevant Approvals)	



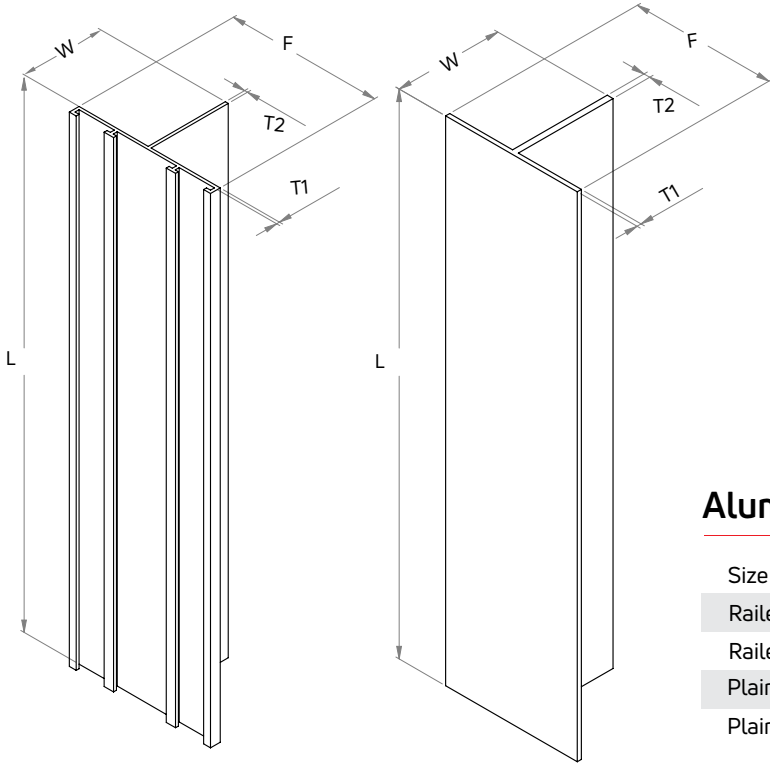
## Self Drilling Screws (SS304/401)

Size (mm)

Hex Head S.D Screw	HEX	4.2x19	5.5x25	6.3x25
Pan Head S.D Screw	PH2	3.9x13	3.9x19	4.2x19
Wafer Head S.D Screw	PH2	4.2x13		



# Framing System Components



## Aluminum T-Channels 6063 T6

### Aluminum T - Channels 6063

Size (mm)

Size	Web Width (W)	Web Thick. (T)	Flange Width (F)	Flange Thick. (T)
Railed T Small	75	1.9	43	1.9
Railed T Large	90	1.9	48	1.9
Plain T Small	60	2.0	100	2.0
Plain T Large	60	3.5	80	2.5



Heavy Holder



Heavy Clamp



Interlock Bracket



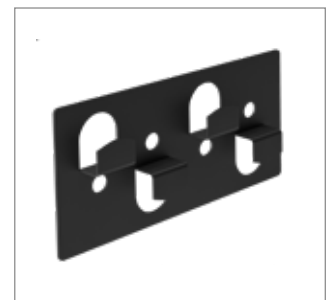
Standard Clamp



Undercut Clamp



Starting Clamp



Turning Clamp

# REFERENCE PROJECTS



St Regis Hotel - Jordan



Fairmont Hotel - Jordan



St Regis Hotel - Qatar



Lusail Circuit Sport Club - Qatar



West Bay Bus Station - Qatar



Izmerian Retail Building - Jordan



Dream Hotel Development - Qatar



Lusail Plaza Towers - Qatar



AL MOWASAT HOSPITAL JEDDAH



Business Park - Jordan



United School International - Qatar



Kempinski Hotel - Jordan



Sheraton Hotel - Jordan



Four Seasons Hotel - Jordan



Grand Hyatt Hotel - Jordan



American University - Iraq

# REFERENCE PROJECTS



Grand Millennium Hotel - Jordan



Abdali Boulevard - Jordan



Kempinski Hotel - Jordan



Farah Hospital - Jordan



Housing Bank Headquarters - Jordan



Siraj Towers - Jordan





[www.technik-jo.com](http://www.technik-jo.com)



[info@technik-jo.com](mailto:info@technik-jo.com)

---

#### JORDAN

TECHNIK ENGINEERING INDUSTRIES  
AL-RAQEEM / AL-AZRAQ HWY 93  
P.O.BOX 110087, AMMAN 11110 JORDAN

PHONE: +962 6 402 6829

#### QATAR

TECHNIK MODERN TRADING  
WEST BAY / PALM TOWER B / 54TH FLOOR  
P.O.BOX 29995, DOHA, QATAR

PHONE: +974 3067 0202

#### SAUDI ARABIA

TECHNIK ARAB INDUSTRIES  
PRINCE MAMDOUH IBN ABDULAZIZ STREET  
7273 AL SULAIMANIYAH DISTRICT RIYADH 12241

PHONE: +966 54 773 1052